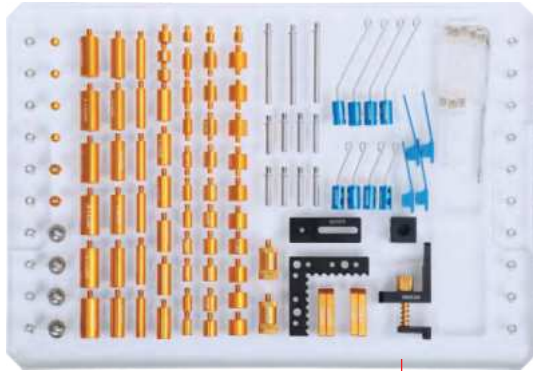
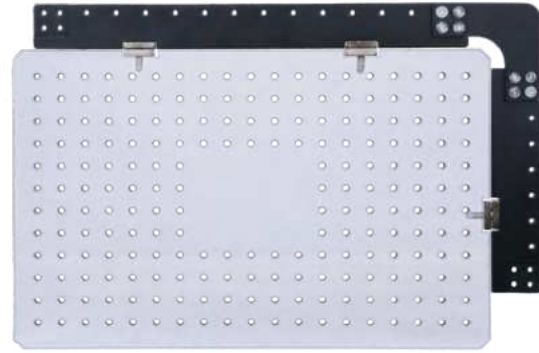


113-PIECE JIG SET FOR VISION MEASURING SYSTEMS CODE ISY-700

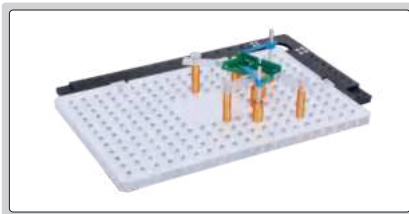



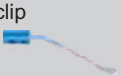

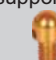





acrylic tray (included)



ISY-700

application example



| Product | Code | Size (mm) | Quantity |
|---|---------------|-----------|----------|
| clip  | ISY-700-90001 | 7×34 | 4 |
| clip  | ISY-700-90002 | Ø1.5×24 | 4 |
| | ISY-700-90003 | Ø1.5×50 | 4 |
| clip stand  | ISY-700-90004 | Ø4×20 | 8 |
| | ISY-700-90005 | Ø4×46 | 3 |
| spherical support head  | ISY-700-90006 | — | 4 |
| stand  | ISY-700-90007 | Ø6×10 | 6 |
| | ISY-700-90008 | Ø6×25 | 6 |
| | ISY-700-90019 | Ø6×5 | 3 |
| stand  | ISY-700-90009 | Ø9×7 | 3 |
| | ISY-700-90010 | Ø9×10 | 6 |
| | ISY-700-90011 | Ø9×20 | 6 |
| | ISY-700-90012 | Ø9×25 | 6 |
| stand  | ISY-700-90013 | Ø12×10 | 6 |
| | ISY-700-90014 | Ø12×25 | 6 |
| stand for slice parts  | ISY-700-90015 | Ø6×10 | 4 |
| | ISY-700-90016 | Ø9×10 | 4 |
| | ISY-700-90017 | Ø12×10 | 4 |
| stand with fine adjustment  | ISY-700-90018 | Ø12×20~25 | 2 |

| Product | Code | Size (mm) | Quantity |
|--|---------------|------------------------------------|----------|
| adapter for square support  | ISY-700-90020 | — | 2 |
| clamping screw  | ISY-700-90021 | — | 4 |
| L-shaped positioning plate  | ISY-700-90022 | 50×50×6 | 1 |
| sliding support plate  | ISY-700-90023 | 30×12×5 | 4 |
| square support  | ISY-700-90024 | 20×16×16 | 1 |
| base for square support  | ISY-700-90025 | 45×16×6 | 1 |
| spring stand  | ISY-700-90026 | — | 1 |
| acrylic sliding support plate  | ISY-700-90028 | 45×12×5 | 8 |
| wrench  | ISY-700-90029 | M3 | 1 |
| acrylic base plate  | ISY-700-90030 | 300×200×12 Hole size: M4X0.7 | 1 |

STANDARD GLASS SCALES



ISD-CL300A

- To calibrate optical measuring instruments, also can be used as optical positioning elements in precision machine tools

STANDARD TYPE

| Code | Measuring range | Graduation | Length | Width | Thickness | Accuracy |
|------------|-----------------|------------|--------|-------|-----------|-----------|
| ISD-CL100A | 100mm | 1mm | 130mm | 30mm | 5mm | 1 μ m |
| ISD-CL200A | 200mm | 1mm | 230mm | 30mm | 5mm | 1 μ m |
| ISD-CL300A | 300mm | 1mm | 330mm | 30mm | 5mm | 1 μ m |
| ISD-CL400A | 400mm | 1mm | 430mm | 30mm | 5mm | 1 μ m |
| ISD-CL500A | 500mm | 1mm | 530mm | 30mm | 5mm | 2 μ m |

ECONOMIC TYPE

| Code | Measuring range | Graduation | Length | Width | Thickness | Accuracy |
|------------|-----------------|------------|--------|-------|-----------|-----------|
| ISD-CL100B | 100mm | 1mm | 130mm | 30mm | 5mm | 3 μ m |
| ISD-CL200B | 200mm | 1mm | 230mm | 30mm | 5mm | 3 μ m |
| ISD-CL300B | 300mm | 1mm | 330mm | 30mm | 5mm | 3 μ m |
| ISD-CL400B | 400mm | 1mm | 430mm | 30mm | 5mm | 3 μ m |
| ISD-CL500B | 500mm | 1mm | 530mm | 30mm | 5mm | 3 μ m |

ADVANCED TYPE (The scale is between two layers of glass and will not be worn off)

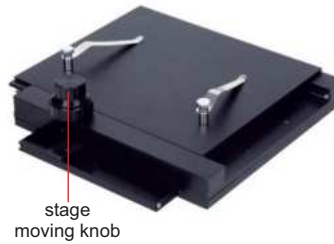
| Code | Measuring range | Graduation | Length | Width | Thickness | Accuracy |
|------------|-----------------|------------|--------|-------|-----------|-------------|
| ISD-CL100S | 100mm | 1mm | 130mm | 30mm | 10mm | 1 μ m |
| ISD-CL200S | 200mm | 1mm | 230mm | 30mm | 10mm | 1.5 μ m |
| ISD-CL300S | 300mm | 1mm | 330mm | 30mm | 15mm | 2.5 μ m |
| ISD-CL400S | 400mm | 1mm | 430mm | 30mm | 15mm | 3 μ m |
| ISD-CL500S | 500mm | 1mm | 530mm | 30mm | 15-25mm | 3.5 μ m |

X-Y METAL STAGE CODE ISM-DL-STAGE1

- Suitable for digital microscopes 5301-D400, 5303-AF103, 5310-DL401, 5313-S407, 5315-S710, 5318-MD60-XY 5324-K210, ISM-DL300, ISM-DL301, ISM-DL302, ISM-DL520

SPECIFICATION

| | |
|-------------------|--------------|
| X-Y travel range | 100×86mm |
| Dimension (L×W×H) | 180×180×50mm |
| Weight | 2.3kg |



RED, GREEN, BLUE, INFRARED AND UV LIGHT CAN BE CUSTOMIZED

ATTENTION: MUST BE USED WITH LIGHT BRACKET AND LIGHT CONTROLLER

LED RING LIGHT CODE ISM-LED-9245R

- Diffuser plate is included to reduce the reflective effect on workpieces
- Suitable for digital microscopes 5303-AF103, 5310-DL401, ISM-DL300, ISM-DL301, ISM-DL302, ISM-DL400, ISM-DL510, 5315-S710

SPECIFICATION

| | |
|-------------------------|---------|
| Light color | white |
| Power supply | 24V |
| Power | 5.5W |
| Angle | 45° |
| Outside/inside diameter | 92/52mm |



RED, GREEN, BLUE, INFRARED AND UV LIGHT CAN BE CUSTOMIZED

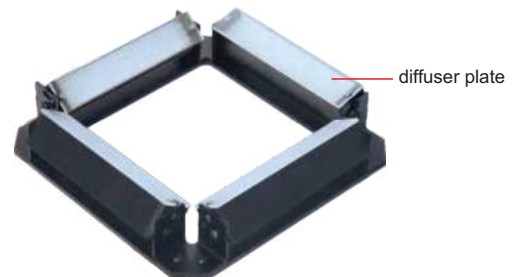
ATTENTION: MUST BE USED WITH LIGHT BRACKET AND LIGHT CONTROLLER

LED SQUARE LIGHT CODE ISM-LED-100L4

- Diffuser plate is included to reduce the reflective effect on workpieces
- Angle and brightness can be adjusted independently
- Suitable for digital microscopes 5303-AF103, 5310-DL401, ISM-DL300, ISM-DL301, ISM-DL302, ISM-DL400, ISM-DL510, 5315-S710

SPECIFICATION

| | |
|-------------------|--------------|
| Light color | white |
| Power supply | 24V |
| Power | 10.36W |
| Angle | 0~90° |
| Dimension (L×W×H) | 154×154×30mm |



DIGITAL LIGHT CONTROLLER CODE ISM-LED-CTRL

- 256 (0-255) steps of brightness adjustment
- With power off memory function and short circuit protection function
- Suitable for ISM-LED-100L4, ISM-LED-9245R

SPECIFICATION

| | |
|------------------------|-------------------|
| Power supply | 100~240V, 50/60HZ |
| Output power (rated) | 60W |
| Output voltage (rated) | 24V |
| Dimension (L×W×H) | 145×118×83mm |



BRACKET FOR LIGHTS CODE ISM-LED-BRACKET



L-shape metal

- 4 pcs L-shape bars are included, multiple combinations can be realized
- Suitable for ISM-LED-100L4, ISM-LED-9245R

application



SPECIFICATION

| | |
|--------------|--------------|
| Size (L×W×H) | 260×300×20mm |
| Weight | 0.7kg |

DUAL HEAD LED LIGHT CODE ISM-ZS-LED

- Adjustable illumination
- For digital and stereo microscopes

SPECIFICATION

| | |
|--------------|----------|
| Power | 3W |
| Power supply | 100~240V |
| Working | 10000h |
| Illumination | 10000lux |



application



LED AUXILIARY LIGHT CODE ISM-DL-LED

- Suitable for digital microscopes
5303-AF103, 5310-DL401, ISM-DL300,
ISM-DL301, ISM-DL302, ISM-DL400,
ISM-DL510, 5315-S710

SPECIFICATION

| | |
|---------------------------|-----------------|
| Power | 8W |
| Diameter of mounting hole | Ø25mm |
| Power supply | 10~12V, 0~300mA |



illumination direction and brightness are adjustable

COAXIAL LIGHT CODE ISM-DL-COAXIAL

- Suitable for digital microscopes
5303-AF103, 5310-DL401, ISM-DL300,
ISM-DL301, ISM-DL302, ISM-DL400,
ISM-DL510, 5315-S710

SPECIFICATION

| | |
|--------------|-----------------|
| Power | 1W |
| Power supply | 0~3.4V, 0~400mA |



for smooth surfaces and small holes, brightness is adjustable

AUXILIARY OBJECTIVES



0.3X auxiliary objective*
ISM-DL-OB03X



0.5X auxiliary objective*
ISM-DL-OB05X



0.75X auxiliary objective*
ISM-DL-OB075X



1X auxiliary objective
ISM-DL-OB1X



1.5X auxiliary objective
ISM-DL-OB1D5X



2X auxiliary objective
ISM-DL-OB2X

- Suitable for digital microscopes 5303-AF103, 5310-DL401, ISM-DL300, ISM-DL301, ISM-DL400, ISM-DL510, 5315-S710, 5317-AF109, 5317-AF110

MAGNIFICATION, FOCUS DISTANCE AND VIEW FIELD (5303-AF103)

| Auxiliary objective | Specification | Camera adapter | |
|---------------------|----------------|-----------------|-----------------|
| | | 0.5X (included) | 1X (optional) |
| 0.3X (optional) | magnification | 6~37X | 12~74X |
| | focus distance | 120~310mm | 120~310mm |
| | view field | 52×30~8×5mm | 26×15~4×2.5mm |
| 0.5X (optional) | magnification | 10~61X | 20~123X |
| | focus distance | 78~230mm | 78~230mm |
| | view field | 37×20~5×3mm | 18×10~2.5×1.5mm |
| 0.75X (optional) | magnification | 15~92X | 30~184X |
| | focus distance | 60~125mm | 60~125mm |
| | view field | 21×13~3.4×2mm | 10×6.5~1.7×1mm |
| 1X (included) | magnification | 20~123X | 40~246X |
| | focus distance | 48~84mm | 48~84mm |
| | view field | 15×8~2.5×1.5mm | 7.5×4~1.3×0.7mm |
| 1.5X (optional) | magnification | 30~184X | 60~368X |
| | focus distance | 36~63mm | 36~63mm |
| | view field | 10×6~1.7×1mm | 5×3~0.9×0.5mm |
| 2X (optional) | magnification | 40~246X | 80~492X |
| | focus distance | 24~42mm | 24~42mm |
| | view field | 7.5×4~1.3×0.7mm | 3.8×2~0.7×0.4mm |

MAGNIFICATION, FOCUS DISTANCE AND VIEW FIELD (ISM-DL300, ISM-DL301, ISM-DL510)

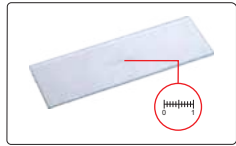
| Auxiliary objective | Specification | Camera adapter | |
|---------------------|----------------|-------------------|-------------------|
| | | 0.5X (included) | 1X (optional) |
| 0.3X (optional) | magnification | 5~34X | 10~68X |
| | focus distance | 287±2mm | 287±2mm |
| | view field | 42×26~6.5×4.5mm | 21×13~3.3×2.3mm |
| 0.5X (optional) | magnification | 9~56X | 18~112X |
| | focus distance | 166±2mm | 166±2mm |
| | view field | 25.6×16.8~5×3.5mm | 12.8×8.4~2×1.3mm |
| 0.75X (optional) | magnification | 13~84X | 26~168X |
| | focus distance | 105±2mm | 105±2mm |
| | view field | 17×10.5~2.6×1.7mm | 8.5×5.3~1.3×0.9mm |
| 1X (included) | magnification | 15~100X | 30~200X |
| | focus distance | 70±2mm | 70±2mm |
| | view field | 16×11~2.5×1.6mm | 7.8×5.3~1.2×0.8mm |
| 1.5X (optional) | magnification | 26~168X | 52~336X |
| | focus distance | 42±2mm | 42±2mm |
| | view field | 8.5×5.2~1.3×0.9mm | 4.3×2.6~0.7×0.5mm |
| 2X (optional) | magnification | 30~200X | 60~400X |
| | focus distance | 29±2mm | 29±2mm |
| | view field | 7.8×5.3~1.2×0.8mm | 3.8×2.7~0.6×0.4mm |

- * For auxiliary objectives 0.3X, 0.5X, 0.75X, use contour illumination of ISM-DL301, ISM-DL400, ISM-DL510, 5310-DL401 or LED light

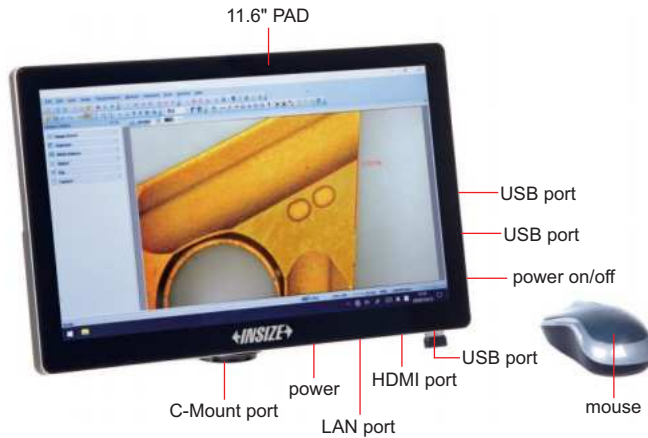
DIGITAL CAMERA FOR MICROSCOPES (WITH PAD) CODE ISM-ZS70-S

ATTENTION: CAMERA CONNECTOR AND ADAPTER ARE NEEDED ACCORDING TO MICROSCOPES

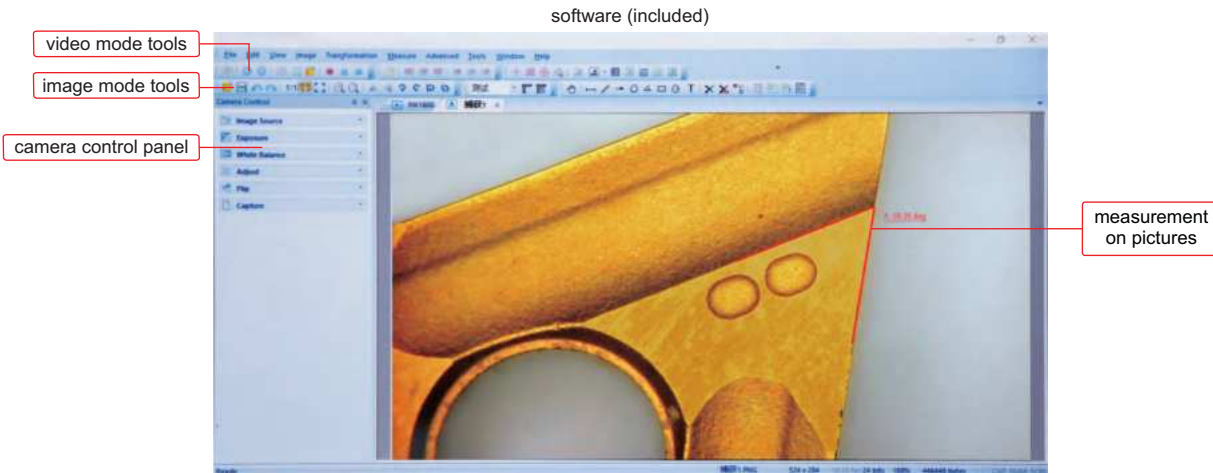
MEASUREMENT, TAKE PICTURES AND VIDEOS



glass calibration ruler (included, graduation 0.1mm)



- Windows 10 operation system
- Built-in software, can take pictures and videos, can measure
- Language: Chinese, English, French, Japanese, German, Polish, Arabic
- Automatic exposure, white balance, brightness, contrast ratio, saturation are adjustable
- Image process feature: zoom in/out, flip, mirror, stitching and so on
- Output to Excel or CSV file



Measuring tools

- measure line
- measure meander line
- arrow mark
- measure polygon
- calibration
- measure angle
- measure rectangle
- measure circle
- text mark
- show/hide scale

SPECIFICATION

| | |
|-------------------|---|
| Sensor | 1/2.3" CMOS |
| Pixel | 16M |
| Resolution | 800×600, 1600×1200, 1920×1080, 2048×1536, 2304×1728, 2592×1944, 4608×3456 |
| Frame rate | 30fps (1920×1080) |
| Output | HDMI, USB 3.0 |
| Power supply | power adapter |
| Dimension (L×W×H) | 280.3×177.4×12.5mm |
| Weight | 0.9kg |

STANDARD DELIVERY

| | |
|--|------|
| Main unit | 1 pc |
| Mouse | 1 pc |
| Glass calibration ruler (graduation 0.1mm) | 1 pc |
| AC/DC adapter | 1 pc |

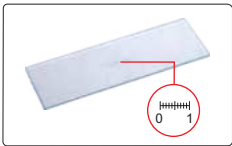


ATTENTION: ADAPTERS ARE NEEDED ACCORDING TO MICROSCOPES

DIGITAL CAMERA FOR MICROSCOPES CODE ISM-CM63

- To be used with computers
- Sony Exmor back-illuminated CMOS sensor
- USB3.0 transmission
- Automatic exposure, gain adjustment, white balance, chrominance adjustment, saturation adjustment, gamma correction, luminance adjustment, contrast adjustment

glass calibration ruler (included, graduation 0.1mm)



C-mount port

adapter 0.75X (optional)



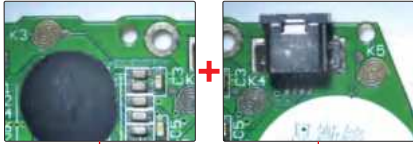
application



automatic image stitching (expand field of view)

left side

right side



after stitching

counting

select counting tool

automatic counting



software (included)

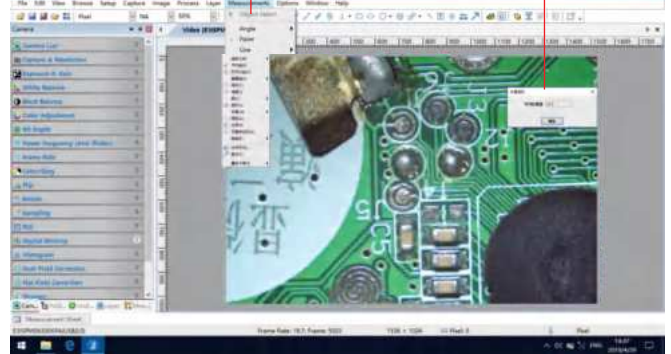
selectable resolution



histogram (quantify the distribution of color and brightness)



measurement items



real time gray calibration

black balance (reduce color difference)



flat field correction (reduce brightness difference)



dark field correction (reduce thermal noise)



The software can control image completely, including measurement, image stitching, extend focus depth, image gray processing, RGB histogram observation, image color sampling, 3D plot (3D representation of image intensity), image exposure, white balance, black balance, image bit depth, flat field correction and dark field correction, etc.

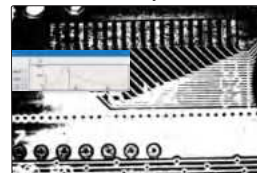
Measuring tools:

- | | | | |
|--|---|--|--|
| | measure length of line or distance between two points | | measure rectangle |
| | measure distance between two parallel lines | | measure width and diameter of ring |
| | measure angle | | measure diameter, length, perimeter angle of arc |
| | measure radius, girth and area of circle | | measure area of polygon |
| | measure axis lengths, girth and area of ellipse | | measure center distance between two circles |
| | calibration | | measure length of open curve |

focus stacking



binary



separate target and background

3D plot



visualize the distribution of image brightness and color

To be continued

Continued from previous page

SPECIFICATION

| | |
|-------------------|--------------------------------------|
| Sensor (back-up) | 1/1.8" CMOS |
| Resolution | 3072x2048 |
| Pixel | 6.3M |
| Single pixel size | 2.4x2.4µm |
| Spectral range | 380-650nm (with infrared cut filter) |
| Frame rate | 30fps |
| Sampling average | 1x1 |
| Exposure time | 0.1ms~15s |
| Power supply | USB port |
| Weight | 400g |

COMPUTER REQUIREMENT

| | |
|------------------|------------------------------|
| Operation system | Windows 7/8/10 |
| CPU | Intel Core 2 2.8Hz or above |
| Memory | 2GB or above |
| USB port | USB3.0 (recommand) or USB2.0 |
| Display | 17" or above |

STANDAER DELIVERY

| | |
|--|------|
| Camera (USB cable included) | 1 pc |
| Software | 1 pc |
| Glass calibration ruler (graduation 0.1mm) | 1 pc |

OPTIONAL ACCESSORY

| | |
|---------------|-------------|
| Adapter 0.75X | ISM-AD-0D75 |
|---------------|-------------|

DIGITAL CAMERA FOR MICROSCOPES CODE ISM-KM60

FOCUS
STACKING

AUTOMATIC IMAGE
STITCHING

ATTENTION: ADAPTERS ARE NEEDED
ACCORDING TO MICROSCOPES



adapter 0.75X
(optional)

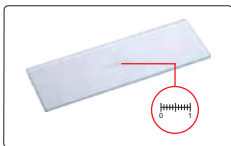


C-mount port

application

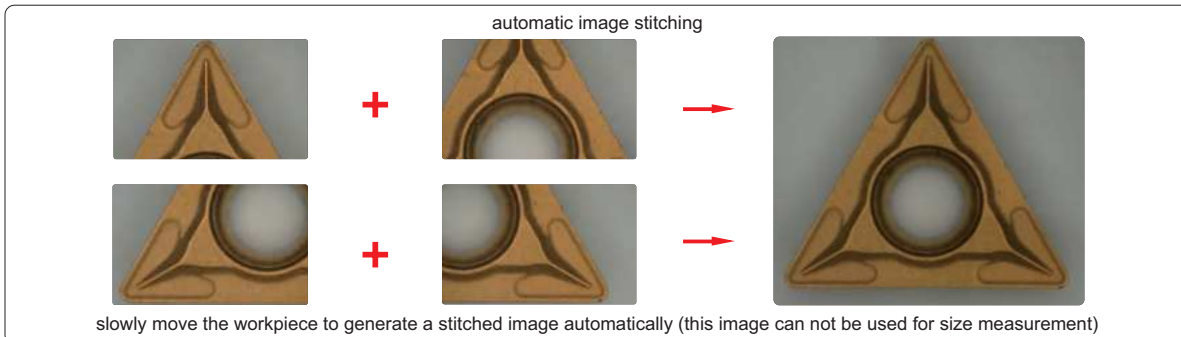
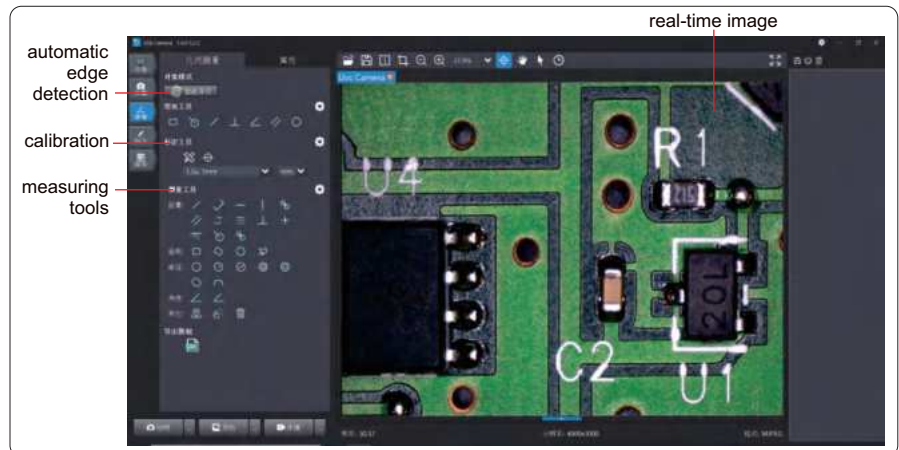


glass calibration ruler
(included, graduation 0.1mm)



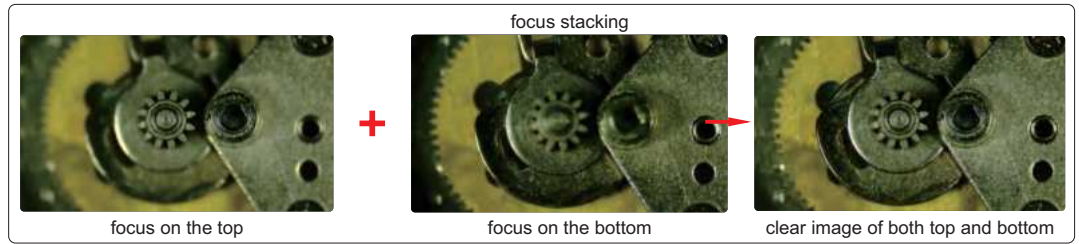
PROFESSIONAL MEASURING SOFTWARE (INCLUDED, FOR COMPUTERS)

- To be used with computers
- Sony Exmor back-illuminated CMOS sensor
- USB3.0 transmission
- Measuring software for computers is included
- For bright field, dark field or fluorescent field
- Automatic exposure, gain adjustment, white balance, chrominance adjustment, saturation adjustment, gamma correction, luminance adjustment, contrast adjustment



To be continued

Continued from previous page



SPECIFICATION

| | |
|---------------------------|-------------------------|
| Sensor (back-up) | 1/1.8" CMOS |
| Resolution | 3072×2048 |
| Pixel | 6M |
| Single pixel size | 2.4×2.4µm |
| Frame rate | 30fps |
| Lens connection | C-mount |
| Output | USB 3.0 |
| Environmental requirement | temperature: -20°C~70°C |
| Weight | 275g |

COMPUTER REQUIREMENT

| | |
|------------------|--------------------------------|
| Operation system | Windows 10 or above |
| CPU | Intel Core i5 7th gen or above |
| Memory | 8GB or above |
| USB port | USB3.0 |

OPTIONAL ACCESSORY

| | |
|---------------|-------------|
| Adapter 0.75X | ISM-AD-0D75 |
|---------------|-------------|

STANDAER DELIVERY

| | |
|--|------|
| Camera (USB cable included) | 1 pc |
| Software | 1 pc |
| Glass calibration ruler (graduation 0.1mm) | 1 pc |



SMART CAMERA CODE ISM-MV10

- Built-in software, operated by mouse.
- Automatically calculate, store the test results and sent to Excel
- Camera with PLC control input and output interface, can be integrated with automation equipment
- Functions: presence or absence of objects, position tilt correction, object counting, color detection, stain detection, dimension measurement, position guide, etc.

SPECIFICATION

| | |
|-----------------------|---|
| Chip structure | FPGA+ARM |
| Operation system | Linux 3.10 |
| Kernel structure | dual-core Cortex-A9 |
| Frequency | 1GHZ |
| I/O port | 3 sets of input and output (can be connected to photoelectric switch, wire switch, PLC, etc.) |
| Operation temperature | -10~70°C |
| Sensor | 1/2" CMOS |
| Single pixel size | 3.75×3.75µm |
| Resolution | 1920×1080 |
| Frame rate | 60fps |
| Video output | HDMI port |
| Lens connection | standard C port |

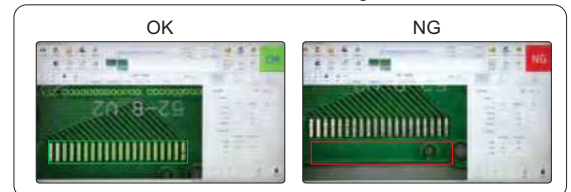
SOFTWARE

presence or absence of objects



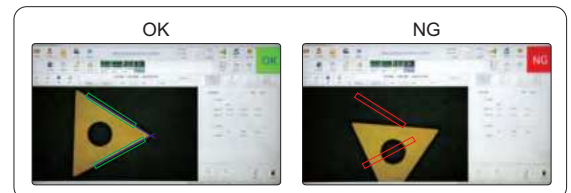
select the area and specify the target, the camera will automatically detect the presence or absence of the target.

automatic counting



select the area and specify the target, the camera will automatically calculate the number of targets.

dimension measurement



measuring angle, distance, radius, center distance, etc.

STANDAER DELIVERY

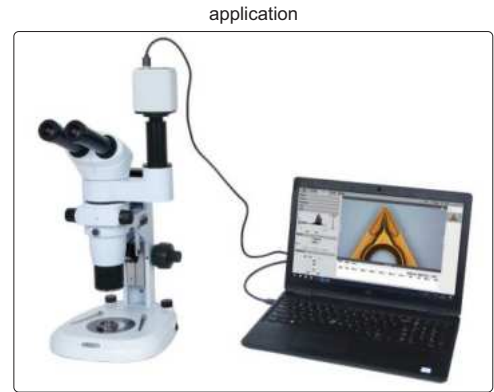
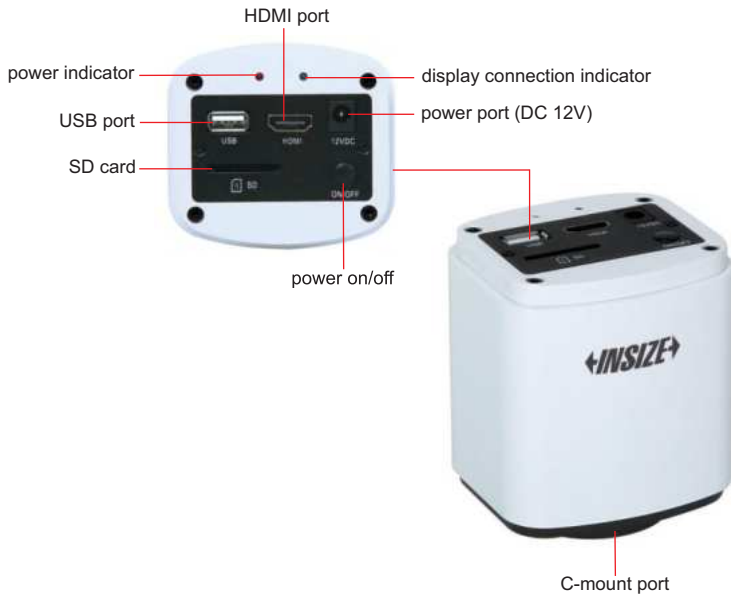
| | |
|--------------------------|------|
| Camera (with HDMI cable) | 1 pc |
| Software | 1 pc |

DIGITAL CAMERA FOR MICROSCOPES CODE ISM-CM20

ATTENTION: ADAPTERS ARE NEEDED ACCORDING TO MICROSCOPES

FOCUS STACKING

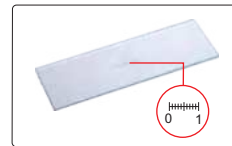
AUTOMATIC IMAGE STITCHING



- 1080P high-definition image
- Can be connected with displays or computers
- Built-in simple measuring software for displays, without computer
- Professional measuring software for computers is included
- For bright field, dark field or fluorescent field
- Automatic exposure, white balance, gain adjustment, gamma correction, brightness contrast adjustment, saturation adjustment, chroma sharpness adjustment
- Focus stacking, automatic image stitching

adapter 0.5X (optional)

glass calibration ruler (included, graduation 0.1mm)



SIMPLE MEASURING SOFTWARE (BUILT-IN, FOR DISPLAYS)

Measuring tools:

- measure length of line or distance between two points
- measure distance between point and line
- measure rectangle
- measure concentric circles
- measure circle
- measure curve
- measure polygon
- measure center distance of two circles
- measure angle of two lines




auto exposure, white balance, gain adjustment, gamma, chroma contrast adjustment, brightness sharpness adjustment, size measurement

To be continued

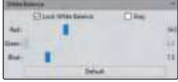
Continued from previous page

PROFESSIONAL MEASURING SOFTWARE (INCLUDED, FOR COMPUTERS)

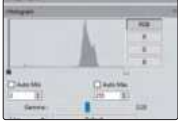
selectable resolution

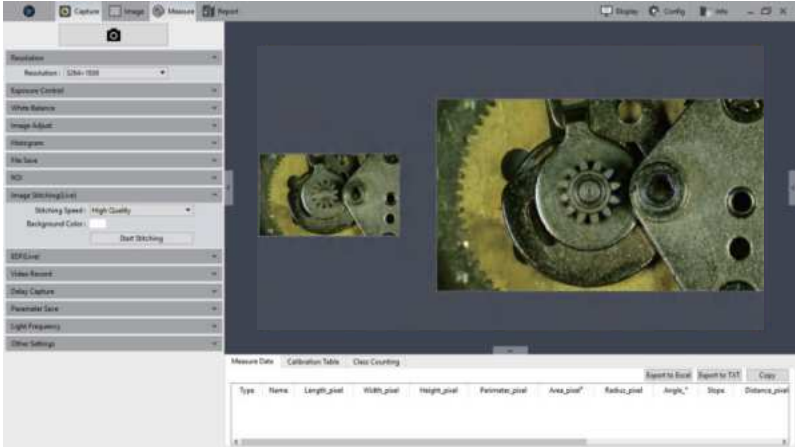


white balance
(balance color based on actual light source)

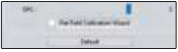


histogram
(quantify the distribution of color and brightness)






flat field correction



metrics flow
(create templates, set tolerances and build metrics flow)



manual counting
(class counting)

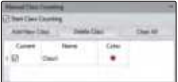





image coloring, fluorescence synthesis, binary, image smoothing, color filter/color extraction/color inversion, delay capture, focus stacking, automatic image stitching, metrics flow, manual counting, dynamic and static measurement, layered measurement, report generation and printing, delay record, flat field correction, image adjustment, histogram.

focus stacking





+

→





focus on the top

focus on the bottom

clear image of both top and bottom

automatic image stitching


+

→



+

→


slowly move the workpiece to generate a stitched image automatically (this image can not be used for size measurement)

SPECIFICATION

| | |
|-----------------|---------------|
| Sensor | 1/2.8" CMOS |
| Pixel | 2M |
| Resolution | 1920×1080 |
| Frame rate | 30fps |
| Power supply | power adapter |
| Output | HDMI/USB |
| Lens connection | C-mount |

COMPUTER (optional) REQUIREMENT

| | |
|------------------|-------------------------|
| Operation system | Windows 7/8/10 (64 bit) |
| CPU | Intel Core i5 or above |
| Memory | 8GB or above |
| USB port | USB 3.0 |

DISPLAY (optional) REQUIREMENT

| | |
|------------|----------------|
| Size | 13" or above |
| Resolution | 1080P or above |
| HDMI port | type A |

STANDARD DELIVERY

| | |
|--|------|
| Main unit | 1 pc |
| 16G memory card and holder | 1 pc |
| Glass calibration ruler (graduation 0.1mm) | 1 pc |
| Mouse | 1 pc |
| HDMI cable | 1 pc |
| USB cable | 1 pc |
| Power supply | 1 pc |

OPTIONAL ACCESSORY

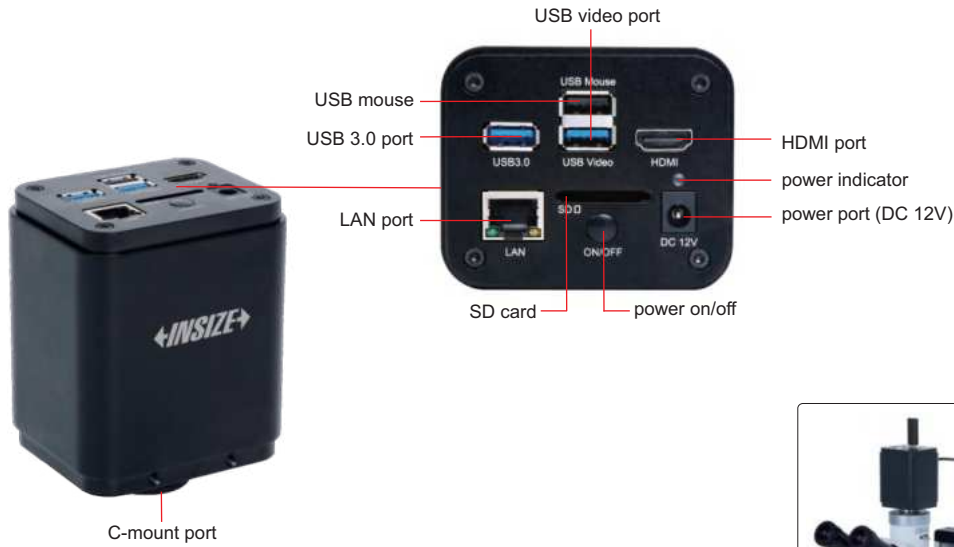
| | |
|--------------|-----------------|
| Adapter 0.5X | ISM-MAS-ADAPTER |
|--------------|-----------------|

WIFI 4K CAMERA FOR MICROSCOPES CODE ISM-MP8B

WIRELESS AD-HOC NETWORK

AUTOMATIC IMAGE STITCHING

FOCUS STACKING



- 4K high-definition image
- Can be connected with displays or computers
- Built-in simple measuring software for display, without computer
- Professional measuring software for computers is included
- 4K HDMI/LAN/USB multiple video outputs
- 4K/1080P automatically switched by display resolution
- Focus stacking, automatic image stitching
- Wireless network or wired network



SPECIFICATION

| | |
|-------------------|--|
| Sensor | 1/1.2" CMOS |
| Pixel | 8M |
| Resolution | 3840×2160, 1920×1080 |
| Single pixel | 2.9×2.9µm |
| Frame rate | 60fps@3840×2160 (HDMI) 30fps@3840×2160 (LAN) 30fps@3840×2160 (USB) |
| Binning | 1×1 |
| Exposure | 0.04~1000ms |
| Output | HDMI/USB/LAN |
| Lens connection | C-mount |
| Power supply | DC 12V 1A |
| Dimension (L×W×H) | 80×65×105mm |
| Weight | 700g |

CONNECTION

| | |
|----------|--|
| HDMI | comply with HDMI 2.0 standard 4K/1080P automatically switched by display resolution |
| LAN | H264 encoded video bandwidth adjustment in real time DHCP configuration or manual configuration unicast/multicast configuration |
| WLAN | connecting 5G WLAN adapter (USB 3.0 interface) in AP/STA mode |
| COMPUTER | connecting USB video port of PC for video transmission H264/MJPEG format video |

To be continued

Continued from previous page

STANDARD DELIVERY

| | |
|-------------------------|------|
| Main unit | 1 pc |
| 32G SD card | 1 pc |
| USB mouse | 1 pc |
| HDMI2.0 cable | 1 pc |
| USB3.0 cable | 1 pc |
| USB wlan adapter | 1 pc |
| Wlan cable | 1 pc |
| Glass calibration ruler | 1 pc |
| Calibration plate | 1 pc |
| Software | 1 pc |
| Power adapter | 1 pc |

OPTIONAL ACCESSORY

| | | |
|--|------------------------|----------------|
| 16G USB flash disk | | IS-USBDISK-16G |
| Adjustable lens adapter | Ø23.2mm eyepiece tube | ISM-MP-2A075 |
| | Ø31.75mm eyepiece tube | ISM-MP-3A075 |
| Fixed lens adapter | Ø23.2mm eyepiece tube | ISM-MP-2F075 |
| | Ø31.75mm eyepiece tube | ISM-MP-3F075 |
| Adapter ring for Ø30.0mm eyepiece tube | | ISM-MP-300R |
| Adapter ring for Ø30.5mm eyepiece tube | | ISM-MP-305R |

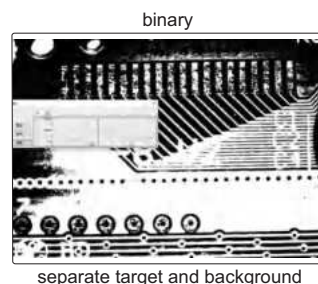
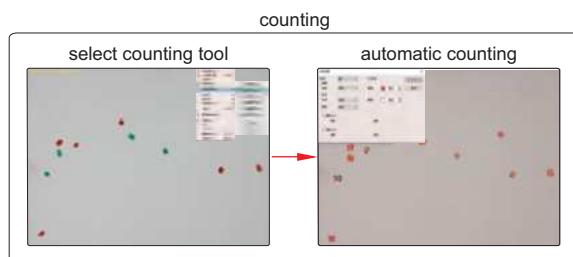
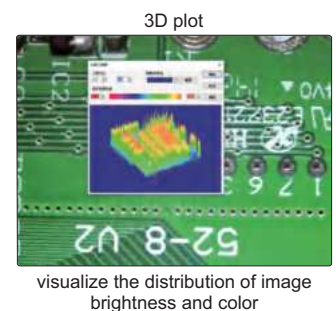
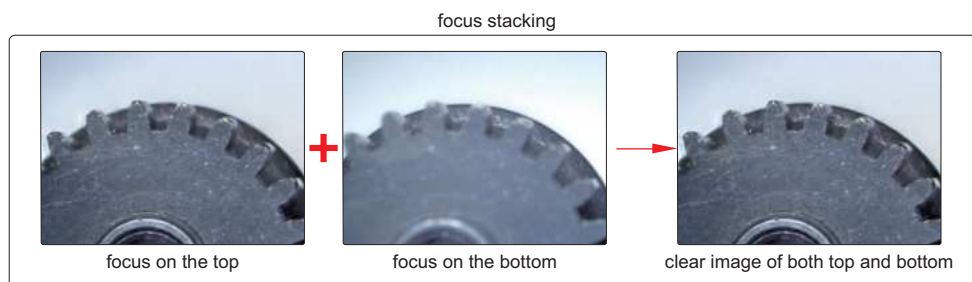
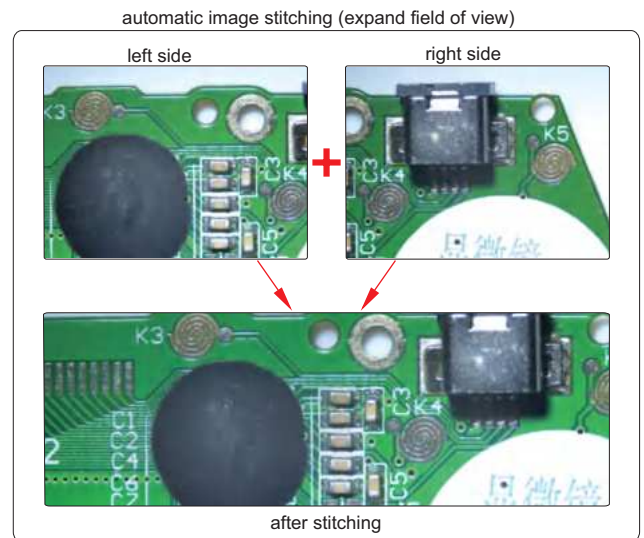
COMPUTER

| | |
|------------------|-------------------------|
| Operation system | Windows 7/8/10/11 |
| CPU | Intel Core 2 2.8Hz |
| Memory | 2GB |
| USB port | USB 3.0 or USB 2.0 port |
| Display | 17" |

PROFESSIONAL MEASURING SOFTWARE (INCLUDED, FOR COMPUTERS)

Measuring tools:

- measure length of line or distance between two points
- measure distance between two parallel lines
- measure angle
- measure radius, girth and area of circle
- measure axis lengths, girth and area of ellipse
- calibration
- measure rectangle
- measure width and diameter of ring
- measure diameter, length, perimeter angle of arc
- measure area of polygon
- measure center distance between two circles
- measure length of open curve



METALLURGICAL ANALYSIS SOFTWARE AND CAMERA CODE ISM-MAS100



- More than 100 standards (ISO, ASTM, JIS, etc.)
- For metallurgical microscopes
- The camera can be inserted into the eyepiece tube or camera connector of microscopes
- Metallurgical analysis software is included, which can make comparative analysis, measurement and evaluation of various materials



application



software flash disk (included)



glass calibration ruler (included)

metallurgical analysis software (included)

tool bar

gallery

this software can be used with variety of metallographic microscopes for acquisition, processing, analysis, report generation of metallurgical images

metallurgical module list

Select sub/Analysis Item

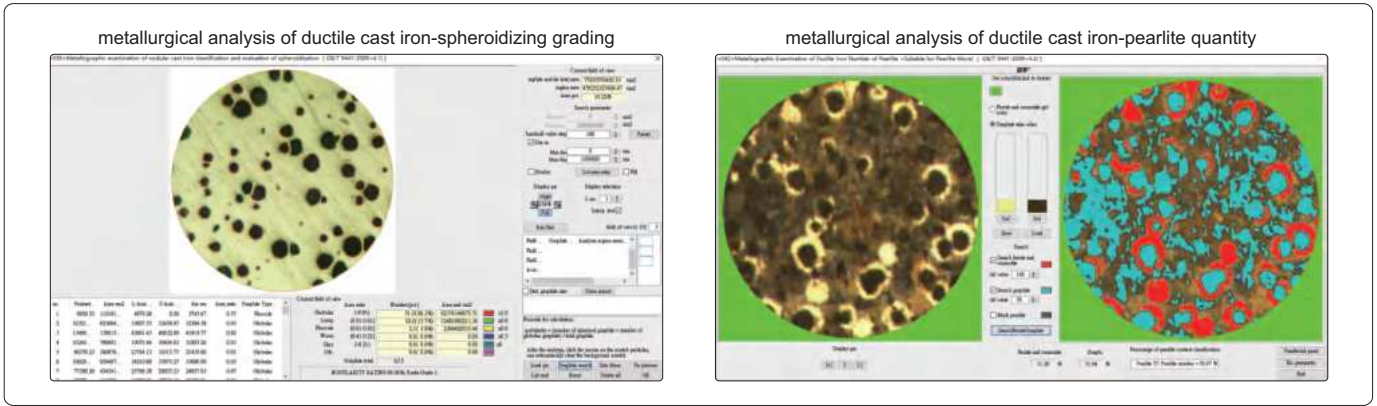
- [001] METHOD OF AVERAGE GRAIN SIZE AREA OF METAL
- [002] METHOD OF AVERAGE GRAIN SIZE POINT METHOD
- [003] METAL AVERAGE GRAIN SIZE COMPARISON METHOD
- [004] Details of Average Grain Size Testing for Other Metals and Alloys
- [005] Standard for Dual Grain Size Characterization Test Method Area Fraction Evaluation Comparison Chart
- [006] Standard for Dual Grain Size Characterization Test Method_M1_Micrographs of Dual Grain Size Types
- [007] Standard for Dual Grain Size Characterization Test Method_M2_Micrographs of Dual Grain Size Types
- [008] Standard for Dual Grain Size Characterization Test Method_M3_Application of Statistical Program for Determining Grain Size Distribution
- [009] Steel Apparent grain size of micrographic estimating (planimetry) Method
- [010] Steel apparent grain size of micrographic estimating (cross-sectional) Method (M)
- [011] Determination of nonmetallic inclusion content in steel by standard grading diagram
- [012] Evaluation Method of Inclusion Content in Steel_method (Low Field of view method)
- [013] Evaluation Method of Inclusion Content in Steel_method (Low Inclusion Content Method)
- [014] Evaluation Method of Inclusion Content in Steel_method (Low Inclusion Content Method)
- [015] Metallurgical examination method, Microscopic examination of non-metallic inclusions in high quality steel by metallographic diagram
- [016] Metallurgical examination of precious metal cuprous oxide
- [017] Determination of decarburization depth of steel
- [018] DETERMINATION OF FERRITIC GRAIN SIZE OF LOW CARBON STEEL OR LOW ALLOY STEEL GRAIN COMPARISON
- [019] Determination of Phase Area Content of Stainless Steel
- [020] Metallurgical examination of Gray Cast Iron Graphite Distribution Shape
- [021] Metallurgical examination of Gray Cast Iron Graphite Length (Manual Analysis)
- [022] Metallurgical inspection of Gray Cast Iron Graphite Length (Automatic Analysis)
- [023] Metallurgical examination of Gray Cast Iron Number of Pearlitic
- [024] Metallurgical examination of Gray Cast Iron Number of Carbides
- [025] Metallurgical examination of Gray Cast Iron Number of Phosphorus Eutectic
- [026] Metallurgical examination of Gray Cast Iron Determination of the number of Eutectic Graphs of Cast Iron
- [027] Metallurgical examination of gray cast iron Phosphorus eutectic type etc.
- [028] Quantitative metallographic determination
- [029] Iron cementite
- [030] Pearlitic in Low Carbon deformed Steel
- [031] Small fissure
- [032] Microanalysis ESEM
- [033] Microstructure Assessment of Steel Calculation of Ferrite Content
- [034] Metallurgical Hardness Needle Length Rating of Carburized Gear for Automobile
- [035] Metallurgical Carbon Rating of Carburized Gears for Automobile
- [036] Metallurgical Retained Austenite Rating of Carburized Gears for Automobile

[Multi-module grad] [OK] [Cancel]

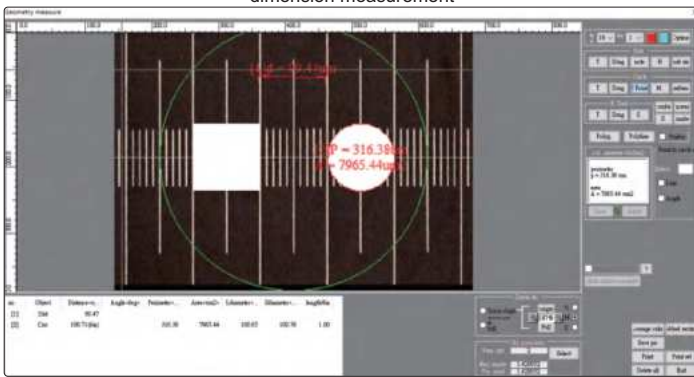
To be continued

Continued from previous page

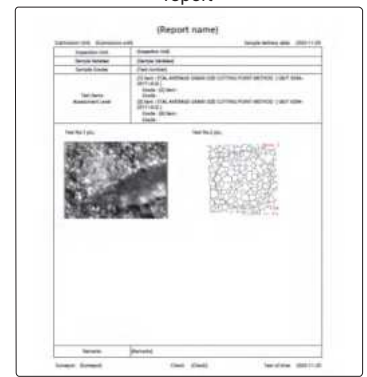
examples of metallurgical analysis



dimension measurement



report



focus stacking

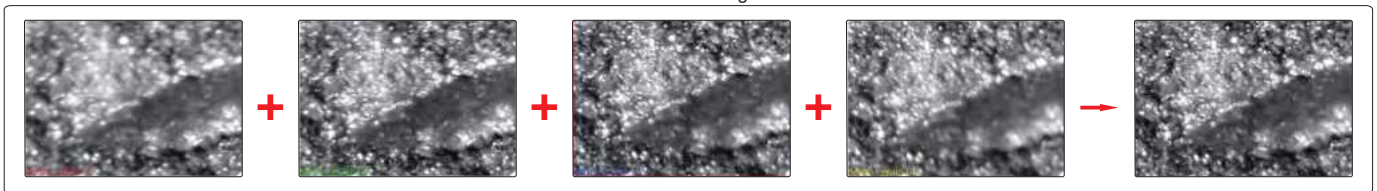
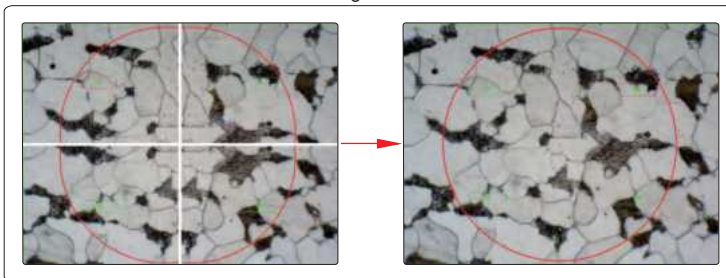
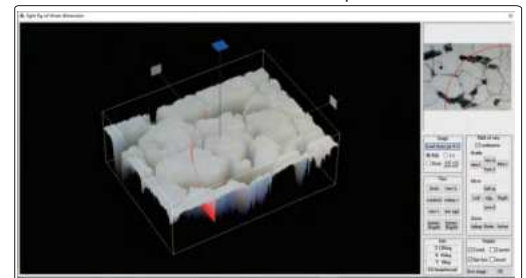


image stitch



three dimension map



SPECIFICATION

| | |
|---------------|-------------|
| Sensor | 1/1.8" CMOS |
| Pixel | 6.3M |
| Resolution | 3072×2048 |
| Frame rate | 30fps |
| Exposure time | 0.1ms~15s |
| Power supply | USB port |
| Weight | 400g |

STANDARD DELIVERY

| | |
|-----------------------------|------|
| Camera (USB cable included) | 1 pc |
| Software | 1 pc |
| Glass calibration ruler | 1 pc |

CAMERA ADAPTERS

- Ø23.2/30mm eyepiece adapter is included
- Suitable for digital cameras
ISM-CM20, ISM-CM63, ISM-ZS70-S, ISM-KM60



Ø23.2/30mm eyepiece adapter (included)



0.5X camera adapter (fixed focus distance)
ISM-AD-0D5



0.75X camera adapter (fixed focus distance)
ISM-AD-0D75



0.5X camera adapter (adjustable focus distance)
ISM-AD-A0D5



0.75X camera adapter (adjustable focus distance)
ISM-AD-A0D75

application

inserted into eyepiece tube



inserted into camera connector



SPECIFICATION

| Code | ISM-AD-0D5 | ISM-AD-A0D5 * | ISM-AD-0D75 | ISM-AD-A0D75 |
|---------------|----------------------|---------------------------|----------------------|---------------------------|
| Type | fixed focus distance | adjustable focus distance | fixed focus distance | adjustable focus distance |
| Magnification | 0.5X | 0.41X~0.58X | 0.75X | 0.64X~0.86X |

* There may be shadows on the edge of image when ISM-AD-A0D5 is used

PORTABLE MEASURING MICROSCOPES



ISM-PM100

SPECIFICATION

| Code | ISM-PM20 | ISM-PM40 | ISM-PM50 | ISM-PM100 |
|------------------------|-------------------------------|------------------------------|-------------------------------|--------------------------------|
| Total magnification | 20X | 40X | 50X | 100X |
| Eyepiece | 10X with graduation | 10X with graduation | 10X with graduation | 10X with graduation |
| Objective (achromatic) | 2X (numerical aperture: 0.05) | 4X (numerical aperture: 0.1) | 5X (numerical aperture: 0.12) | 10X (numerical aperture: 0.25) |
| Working distance | 17.2mm | 18mm | 17.6mm | 7mm |
| Graduation | 0.05mm | 0.025mm | 0.02mm | 0.01mm |
| Viewing field | Ø9mm | Ø4.5mm | Ø3.6mm | Ø1.8mm |
| Focus range | 30mm | | | |
| Illumination | LED light | | | |
| Diameter of base | Ø63mm | | | |
| Height | 210mm | | | |
| Weight | 650g | | | |

STANDARD DELIVERY

| | |
|---------------|-------|
| Main unit | 1 pc |
| Pen light | 1 pc |
| Battery (AAA) | 2 pcs |